

# RAINFOREST FOOD CHAINS

ENERGY FROM SUN, SOIL & WATER

⇒ **PRODUCER**  
Plants make food - leaves, flowers, nectar, fruit and litter

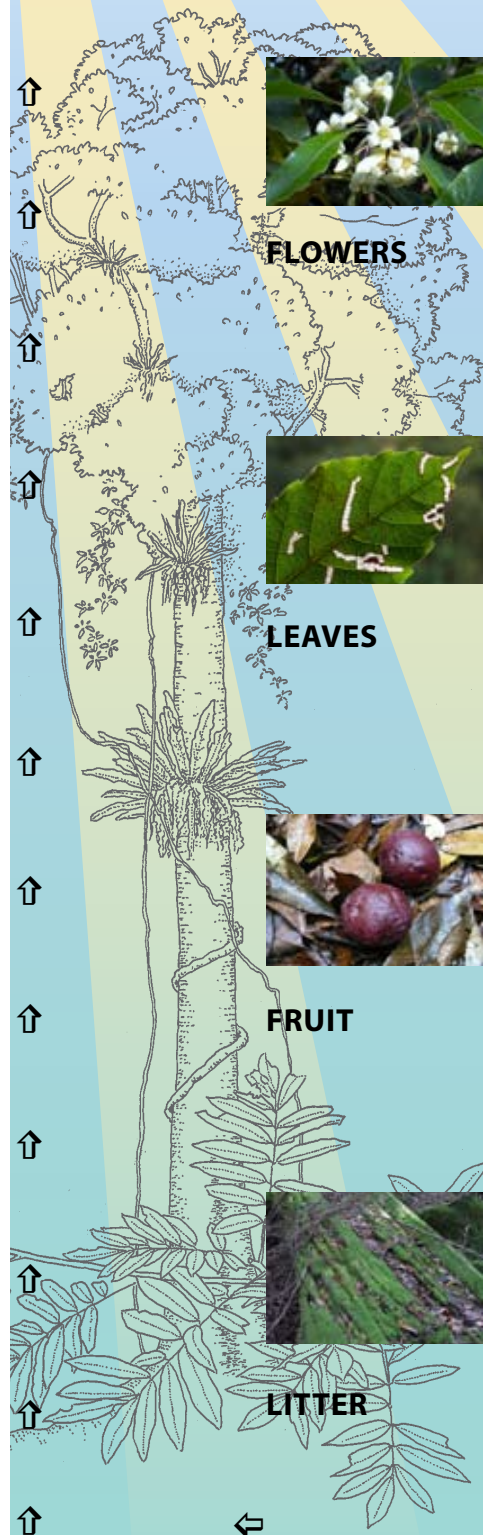
⇒ **1ST CONSUMER**

⇒ **2ND CONSUMER**

⇒ **3ND CONSUMER**

⇒ **DECOMPOSER**

## EXAMPLES:



**FLOWERS**



⇒ Moth eats nectar at night



⇒ Spider eats moth



⇒ Grey Shrike Thrush eats spider



⇒ Shrike Thrush dies and is eaten by decomposers



**LEAVES**



⇒ Hawk Moth caterpillar eats leaves



⇒ Tawny Frogmouth eats Hawk Moth



⇒ Lace Monitor eats eggs of Tawny Frogmouth



⇒ Lace Monitor dies and is eaten by decomposers



**FRUIT**



⇒ Wonga Pigeon eats fallen fruit and seeds



⇒ Diamond Python eats Wonga Pigeon



⇒ Diamond Python dies and is eaten by decomposers



**LITTER**



⇒ Fungi lives on dead wood



⇒ Snail eats fungi



⇒ Noisy Pitta eats snail



⇒ Noisy Pitta dies and is eaten by decomposers

# RAINFOREST FOOD CHAINS

Copy this page and cut out each of the cards.

Read the information on each, and arrange them to make your own rainforest food web.

Colour code : **Energy** ⇒ **Producer** ⇒ **1st Consumer** ⇒ **2nd & 3rd Consumer** ⇒ **Decomposer**

⇒ indicates a transfer of energy between trophic levels of photosynthesis and eating

**Wanderer Butterfly**  
sips nectar



**Booyong**  
leaves are edible



**Lyrebird**  
scratches in  
the leaf litter  
for worms and  
insects



**Lace Monitor**  
eats insects, reptiles,  
eggs, birds, mammals  
& carrion



**Looper Caterpillar**  
eats leaves



**Forest Owl**  
nocturnal  
predator of  
rats, possums,  
birds and  
bats



**Ants**  
eat remains of dead  
animals



**Echidna**  
digs for ants and  
termites



**Green Tree Frog**  
eats insects



**Maggots**  
live on dead animals



**SUN, SOIL  
& WATER**



**Worms**  
eat dead plant material  
in the soil



**Ring-tailed  
possum**  
eats flowers,  
leaves  
and fruit



**Red-necked Pademelon**  
eats leaves and fruit



**Rainforest tree**  
makes nectar in  
flowers  
from the  
sun's energy



**Fruit dove**  
eats fruit and  
seeds



**SUN, SOIL  
& WATER**



**Diamond Python**  
hunts for possums,  
birds, and frogs



**Grey-headed Fruit Bat**  
feeds on rainforest  
fruits  
and nectar



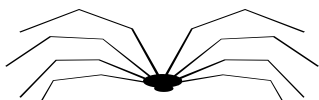
**Strangler Fig**  
produces plentiful figs



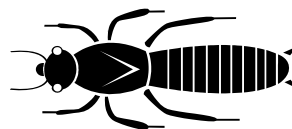
**Domestic cat**  
eats small  
birds,  
mammals  
and lizards



**Huntsman Spider**  
hunts for insects in bark



**Termites**  
Insect colony eats wood



**Noisy Pitta**  
eats snails and insects

